

COLLEGE LIBRARY SYSTEM

Submitted to:

Sir Justin David Pineda

Submitted by:

Leah Marie David

Chelsea Cedro

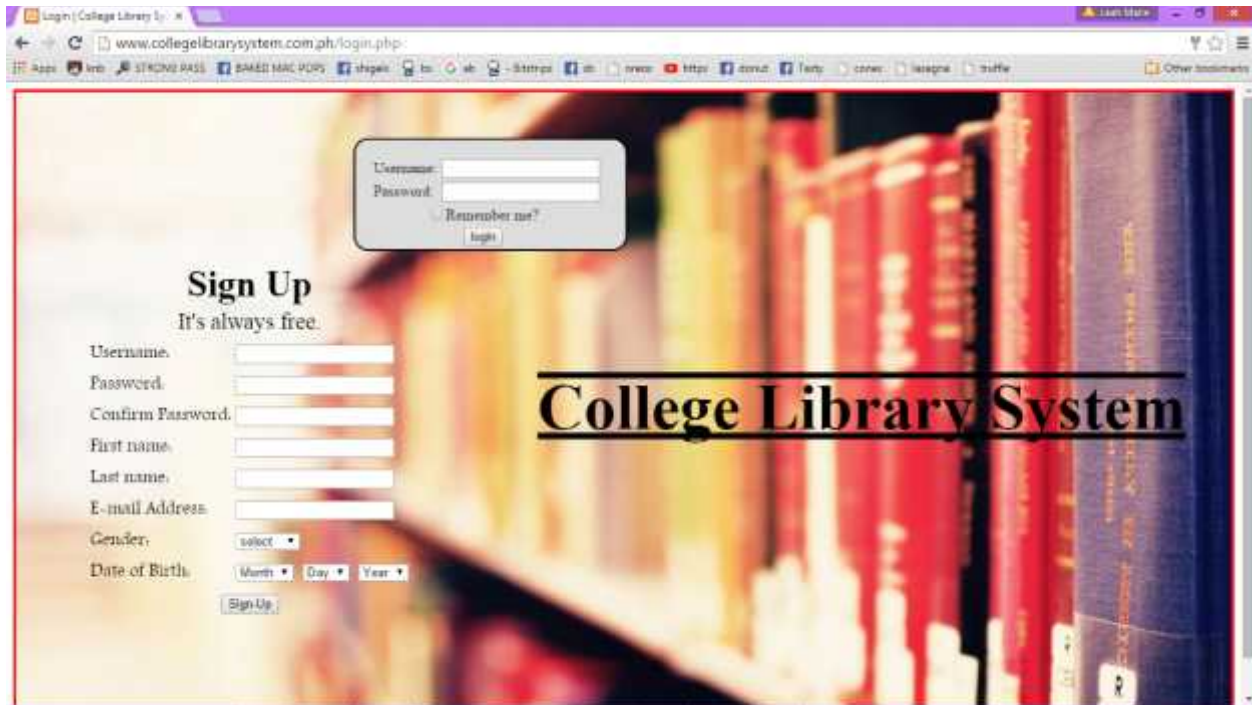
Amielle Ortega

Reuel Ongkingko

MI131

SCREENSHOTS:

ADMIN INTERFACE



View Account | College Libr... | www.collegelibrarysystem.com.ph/user.php

Welcome to the library system! | [Logout](#)

College Library System

HOME | BORROWED BOOKS | RETURN BOOKS | USER ACCOUNT | **BOOK LIST** | ABOUT US

List of User Accounts

Username	Password	Action
ibdrvd123		EDIT DELETE
lmdmure123		EDIT DELETE

Calendar

September, 2015

Sun	Mon	Tue	Wed	Thu	Fri	Sat
		1	2	3	4	5
6	7	8	9	10	11	12
13	14	15	16	17	18	19
20	21	22	23	24	25	26
27	28	29	30			

About Us | College Libr... | www.collegelibrarysystem.com.ph/aboutus.php

Welcome to the library system! | [Logout](#)

College Library System

HOME | BORROWED BOOKS | RETURN BOOKS | USER ACCOUNT | **BOOK LIST** | ABOUT US

About us

This is an open library system that aims to provide a better and easiest way of reading, searching, and borrowing books. You can create an account for free to easily access our full website and if you want to borrow some books. You can also check books that you can be able to borrow in the library, you can borrow book but it is only applicable if you have an account. This website has list of books menu for searching and borrowing, return books menu for returning books, and borrowed books menu for books that is has been borrowed.

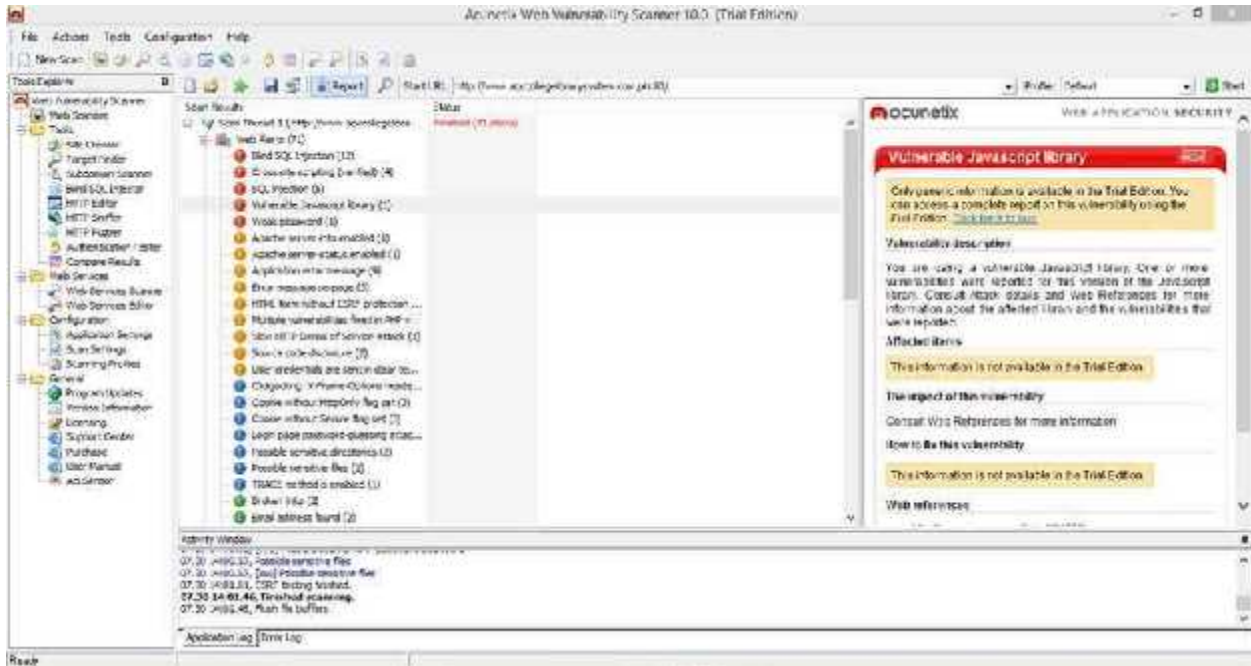
Calendar

September, 2015

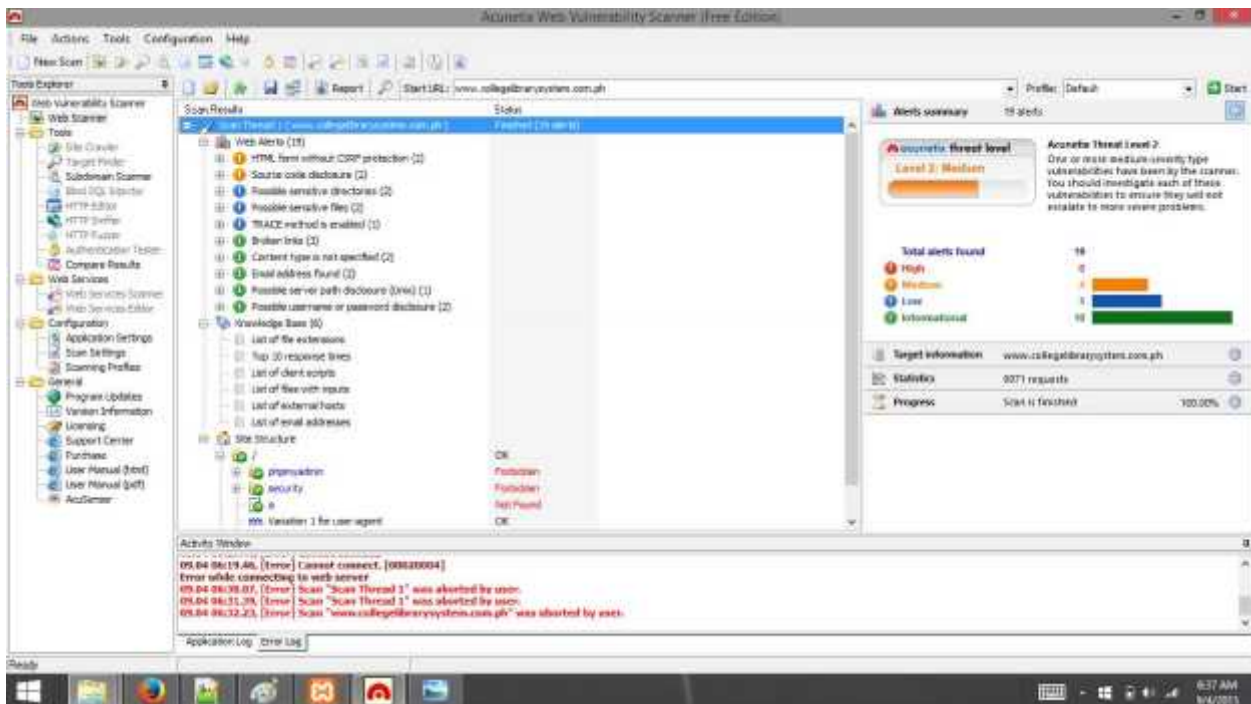
Sun	Mon	Tue	Wed	Thu	Fri	Sat
		1	2	3	4	5
6	7	8	9	10	11	12
13	14	15	16	17	18	19
20	21	22	23	24	25	26
27	28	29	30			

PROBLEMS:

1st ATTEMPT OF VULNERABILITY SCANNING

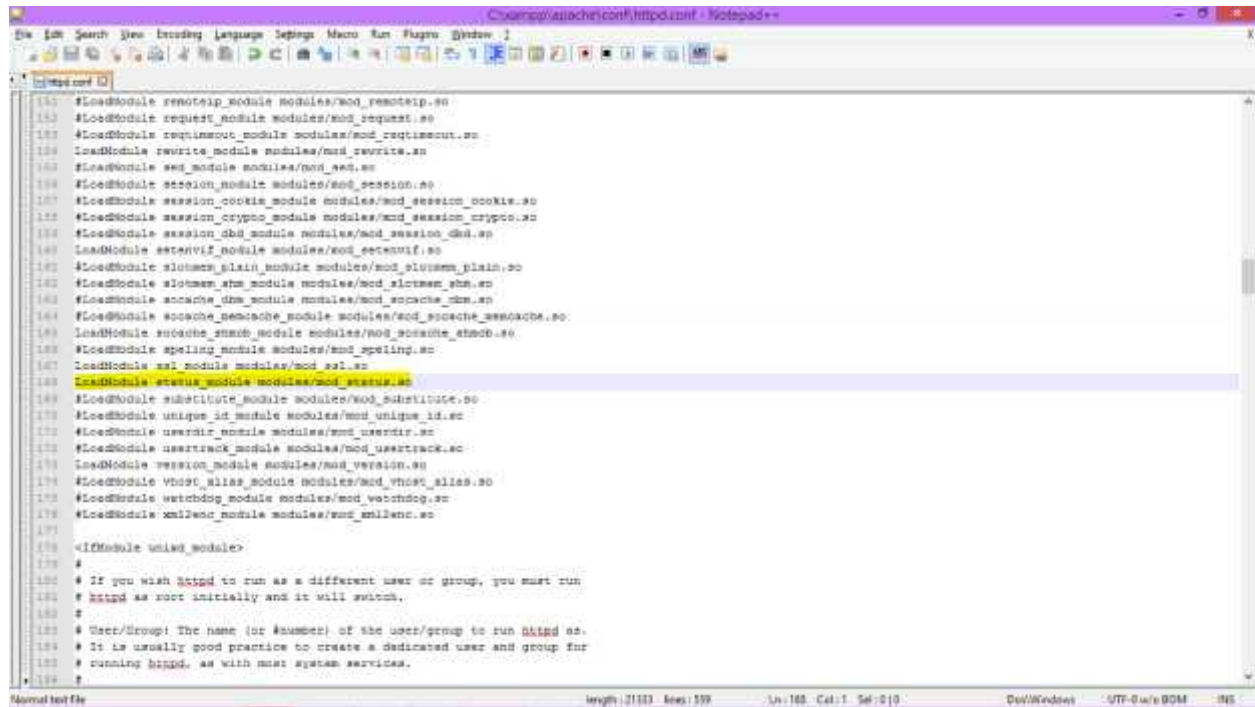


LAST ATTEMPT OF VULNERABILITY SCANNING



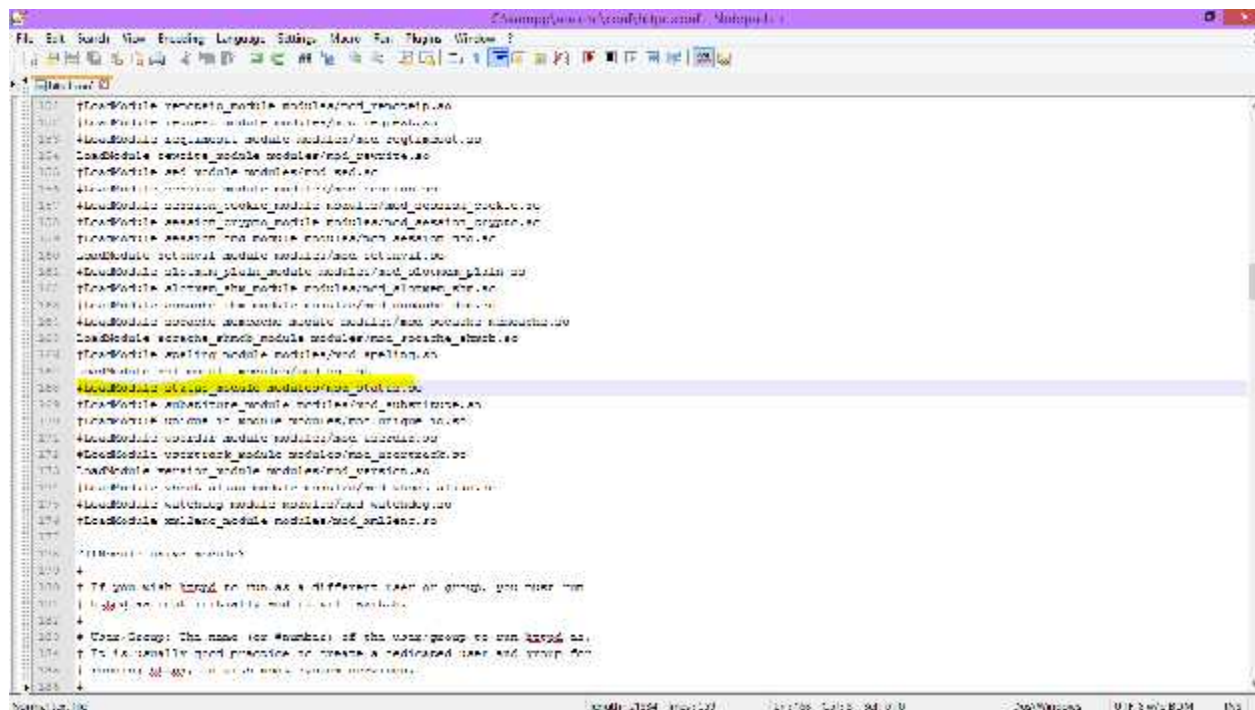
APACHE SERVER-STATUS ENABLED

BEFORE



```
151 #LoadModule remoteip_module modules/mod_remoteip.so
152 #LoadModule request_module modules/mod_request.so
153 #LoadModule reqtimeout_module modules/mod_reqtimeout.so
154 LoadModule rewrite_module modules/mod_rewrite.so
155 #LoadModule sed_module modules/mod_sed.so
156 #LoadModule session_module modules/mod_session.so
157 #LoadModule session_cookie_module modules/mod_session_cookie.so
158 #LoadModule session_crypto_module modules/mod_session_crypto.so
159 #LoadModule session_dbd_module modules/mod_session_dbd.so
160 #LoadModule setenvif_module modules/mod_setenvif.so
161 #LoadModule slotmem_plain_module modules/mod_slotmem_plain.so
162 #LoadModule slotmem_shm_module modules/mod_slotmem_shm.so
163 #LoadModule socache_dbm_module modules/mod_socache_dbm.so
164 #LoadModule socache_shmcb_module modules/mod_socache_shmcb.so
165 #LoadModule ssl_module modules/mod_ssl.so
166 #LoadModule status_module modules/mod_status.so
167 #LoadModule substitute_module modules/mod_substitute.so
168 #LoadModule unique_id_module modules/mod_unique_id.so
169 #LoadModule userdir_module modules/mod_userdir.so
170 #LoadModule usertrack_module modules/mod_usertrack.so
171 #LoadModule version_module modules/mod_version.so
172 #LoadModule vhost_alias_module modules/mod_vhost_alias.so
173 #LoadModule watchdog_module modules/mod_watchdog.so
174 #LoadModule xml2enc_module modules/mod_xml2enc.so
175
176
177
178 <IfModule unixd_module>
179 #
180 # If you wish httpd to run as a different user or group, you must run
181 # httpd as root initially and it will switch.
182 #
183 # User/Group: The name (or #number) of the user/group to run httpd as.
184 # It is usually good practice to create a dedicated user and group for
185 # running httpd, as with most system services.
186 #
```

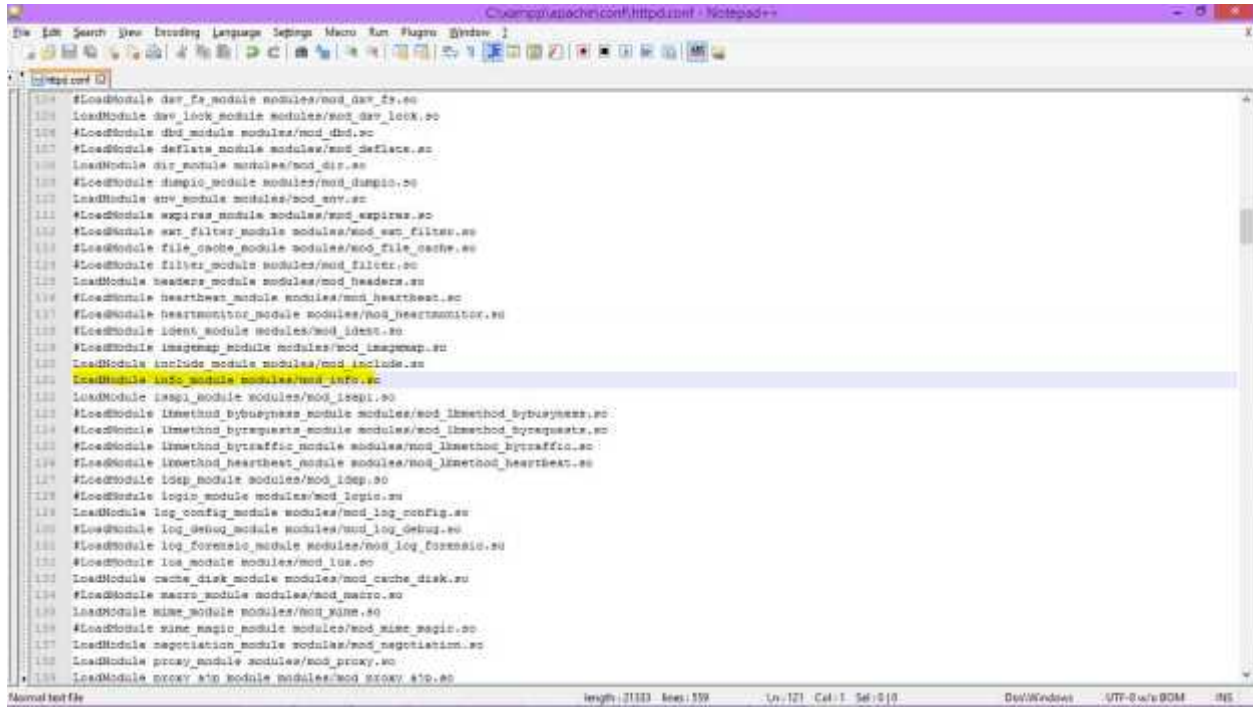
AFTER



```
151 #LoadModule remoteip_module modules/mod_remoteip.so
152 #LoadModule request_module modules/mod_request.so
153 #LoadModule reqtimeout_module modules/mod_reqtimeout.so
154 LoadModule rewrite_module modules/mod_rewrite.so
155 #LoadModule sed_module modules/mod_sed.so
156 #LoadModule session_module modules/mod_session.so
157 #LoadModule session_cookie_module modules/mod_session_cookie.so
158 #LoadModule session_crypto_module modules/mod_session_crypto.so
159 #LoadModule session_dbd_module modules/mod_session_dbd.so
160 #LoadModule setenvif_module modules/mod_setenvif.so
161 #LoadModule slotmem_plain_module modules/mod_slotmem_plain.so
162 #LoadModule slotmem_shm_module modules/mod_slotmem_shm.so
163 #LoadModule socache_dbm_module modules/mod_socache_dbm.so
164 #LoadModule socache_shmcb_module modules/mod_socache_shmcb.so
165 #LoadModule ssl_module modules/mod_ssl.so
166 #LoadModule status_module modules/mod_status.so
167 #LoadModule substitute_module modules/mod_substitute.so
168 #LoadModule unique_id_module modules/mod_unique_id.so
169 #LoadModule userdir_module modules/mod_userdir.so
170 #LoadModule usertrack_module modules/mod_usertrack.so
171 #LoadModule version_module modules/mod_version.so
172 #LoadModule vhost_alias_module modules/mod_vhost_alias.so
173 #LoadModule watchdog_module modules/mod_watchdog.so
174 #LoadModule xml2enc_module modules/mod_xml2enc.so
175
176
177
178 <IfModule unixd_module>
179 #
180 # If you wish httpd to run as a different user or group, you must run
181 # httpd as root initially and it will switch.
182 #
183 # User/Group: The name (or #number) of the user/group to run httpd as.
184 # It is usually good practice to create a dedicated user and group for
185 # running httpd, as with most system services.
186 #
```

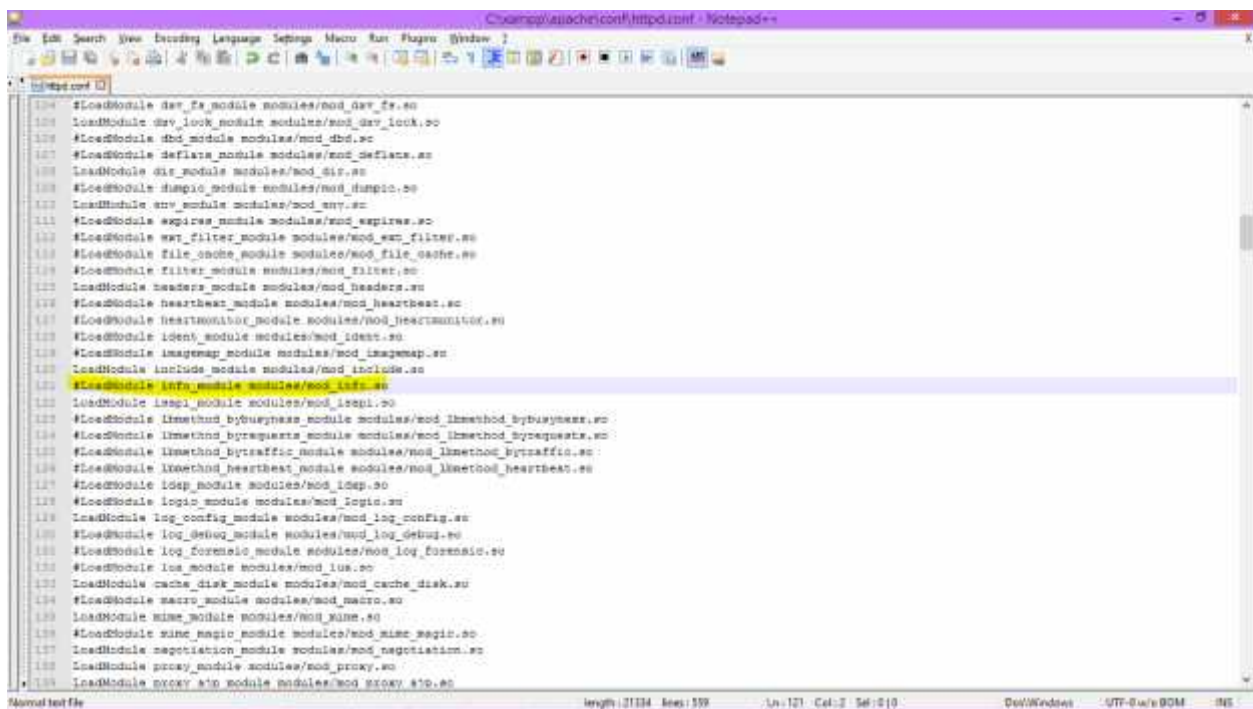
APACHE SERVER-INFO ENABLED

BEFORE



```
104 #LoadModule dav_fs_module modules/mod_dav_fs.so
105 #LoadModule dav_lock_module modules/mod_dav_lock.so
106 #LoadModule dbd_module modules/mod_dbd.so
107 #LoadModule deflate_module modules/mod_deflate.so
108 #LoadModule dir_module modules/mod_dir.so
109 #LoadModule dumpio_module modules/mod_dumpio.so
110 #LoadModule env_module modules/mod_env.so
111 #LoadModule expires_module modules/mod_expires.so
112 #LoadModule ssl_filter_module modules/mod_ssl_filter.so
113 #LoadModule file_cache_module modules/mod_file_cache.so
114 #LoadModule filter_module modules/mod_filter.so
115 #LoadModule headers_module modules/mod_headers.so
116 #LoadModule heartbeat_module modules/mod_heartbeat.so
117 #LoadModule heartmonitor_module modules/mod_heartmonitor.so
118 #LoadModule ident_module modules/mod_ident.so
119 #LoadModule imagemap_module modules/mod_imagemap.so
120 #LoadModule include_module modules/mod_include.so
121 #LoadModule info_module modules/mod_info.so
122 #LoadModule isapi_module modules/mod_isapi.so
123 #LoadModule lmmethod_bybyrequest_module modules/mod_lmmethod_bybyrequest.so
124 #LoadModule lmmethod_bybyrequest_module modules/mod_lmmethod_bybyrequest.so
125 #LoadModule lmmethod_bytraffic_module modules/mod_lmmethod_bytraffic.so
126 #LoadModule lmmethod_heartbeat_module modules/mod_lmmethod_heartbeat.so
127 #LoadModule logsp_module modules/mod_logsp.so
128 #LoadModule logio_module modules/mod_logio.so
129 #LoadModule log_config_module modules/mod_log_config.so
130 #LoadModule log_debuq_module modules/mod_log_debuq.so
131 #LoadModule log_forensic_module modules/mod_log_forensic.so
132 #LoadModule lua_module modules/mod_lua.so
133 #LoadModule cache_disk module modules/mod_cache_disk.so
134 #LoadModule macro_module modules/mod_macro.so
135 #LoadModule mime_module modules/mod_mime.so
136 #LoadModule mime_magic_module modules/mod_mime_magic.so
137 #LoadModule negotiation_module modules/mod_negotiation.so
138 #LoadModule proxy_module modules/mod_proxy.so
139 #LoadModule proxy_html_module modules/mod_proxy_html.so
```

AFTER



```
104 #LoadModule dav_fs_module modules/mod_dav_fs.so
105 #LoadModule dav_lock_module modules/mod_dav_lock.so
106 #LoadModule dbd_module modules/mod_dbd.so
107 #LoadModule deflate_module modules/mod_deflate.so
108 #LoadModule dir_module modules/mod_dir.so
109 #LoadModule dumpio_module modules/mod_dumpio.so
110 #LoadModule env_module modules/mod_env.so
111 #LoadModule expires_module modules/mod_expires.so
112 #LoadModule ssl_filter_module modules/mod_ssl_filter.so
113 #LoadModule file_cache_module modules/mod_file_cache.so
114 #LoadModule filter_module modules/mod_filter.so
115 #LoadModule headers_module modules/mod_headers.so
116 #LoadModule heartbeat_module modules/mod_heartbeat.so
117 #LoadModule heartmonitor_module modules/mod_heartmonitor.so
118 #LoadModule ident_module modules/mod_ident.so
119 #LoadModule imagemap_module modules/mod_imagemap.so
120 #LoadModule include_module modules/mod_include.so
121 #LoadModule info_module modules/mod_info.so
122 #LoadModule isapi_module modules/mod_isapi.so
123 #LoadModule lmmethod_bybyrequest_module modules/mod_lmmethod_bybyrequest.so
124 #LoadModule lmmethod_bybyrequest_module modules/mod_lmmethod_bybyrequest.so
125 #LoadModule lmmethod_bytraffic_module modules/mod_lmmethod_bytraffic.so
126 #LoadModule lmmethod_heartbeat_module modules/mod_lmmethod_heartbeat.so
127 #LoadModule logsp_module modules/mod_logsp.so
128 #LoadModule logio_module modules/mod_logio.so
129 #LoadModule log_config_module modules/mod_log_config.so
130 #LoadModule log_debuq_module modules/mod_log_debuq.so
131 #LoadModule log_forensic_module modules/mod_log_forensic.so
132 #LoadModule lua_module modules/mod_lua.so
133 #LoadModule cache_disk module modules/mod_cache_disk.so
134 #LoadModule macro_module modules/mod_macro.so
135 #LoadModule mime_module modules/mod_mime.so
136 #LoadModule mime_magic_module modules/mod_mime_magic.so
137 #LoadModule negotiation_module modules/mod_negotiation.so
138 #LoadModule proxy_module modules/mod_proxy.so
139 #LoadModule proxy_html_module modules/mod_proxy_html.so
```


INPUT PROPER VALIDATION

BEFORE

```
C:\WebSite\www.collegebrarysystem.com\lib\login.php - Notepad++
File Edit Search View Encoding Language Settings Macro Run Plugins Window Help
login.php
101 <td>
102 <td class="sign">Password:</td>
103 <td class="sign"><input type="password" name="password"></td>
104 </tr>
105 <tr>
106 <td class="sign">Confirm Password:</td>
107 <td class="sign"><input type="password" name="confirmpassword"></td>
108 </tr>
109 <tr>
110 <td class="sign">First name:</td>
111 <td class="sign"><input type="text" name="fname"></td>
112 </tr>
113 <tr>
114 <td class="sign">Last name:</td>
115 <td class="sign"><input type="text" name="lname"></td>
116 </tr>
117 <tr>
118 <td class="sign">E-mail Address: </td>
119 <td class="sign"><input type="text" name="email"></td>
120 </tr>
121 <tr>
122 <td class="sign">Gender:</td>
123 <td class="sign">
124 <select name="gender">
125 <option value="m">select</option>
126 <option value="male">Male</option>
127 <option value="female">Female</option>
128 </select></td>
129 </tr>
130 <tr>
131 <td class="sign">Date of Birth: </td>
132 <td class="sign">
133 <select name="month">
134 <option value="all">Month</option>
135 <option value="1">Jan</option>
136 <option value="2">Feb</option>
137 <option value="3">Mar</option>
138 <option value="4">Apr</option>
```

AFTER

```
C:\Users\Aliyah2506\AppData\Local\Temp\Temp1\collegebrarysystem\collegebrarysystem\login.php - Notepad++
File Edit Search View Encoding Language Settings Macro Run Plugins Window Help
login.php
200 <td class="sign">First name:</td>
201 <td class="sign"><input type="text" name="fname"></td>
202 </tr>
203 <tr>
204 <td class="sign">Last name:</td>
205 <td class="sign"><input type="text" name="lname"></td>
206 </tr>
207 <tr>
208 <td class="sign">E-mail Address: </td>
209 <td class="sign"><input type="text" name="email"></td>
210 </tr>
211 <tr>
212 <td class="sign">Gender:</td>
213 <td class="sign">
214 <select name="gender">
215 <option value="m">select</option>
216 <option value="male">Male</option>
217 <option value="female">Female</option>
218 </select></td>
219 </tr>
220 <tr>
221 <td class="sign">Date of Birth: </td>
222 <td class="sign">
223 <select name="month">
224 <option value="all">Month</option>
225 <option value="1">Jan</option>
226 <option value="2">Feb</option>
227 <option value="3">Mar</option>
228 <option value="4">Apr</option>
229 <option value="5">May</option>
230 <option value="6">June</option>
231 <option value="7">July</option>
232 <option value="8">Aug</option>
233 <option value="9">Sept</option>
234 <option value="10">Oct</option>
235 <option value="11">Nov</option>
```